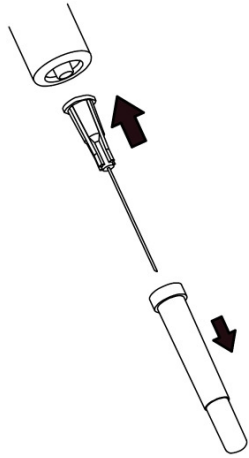


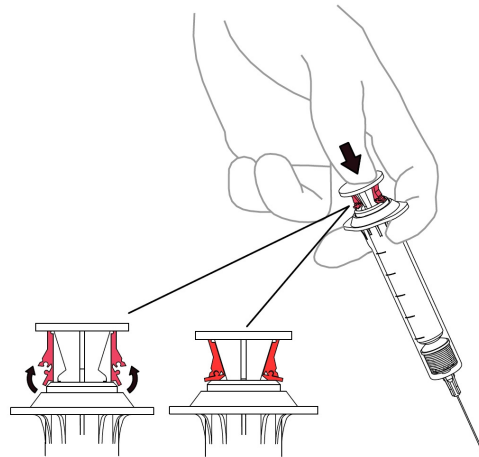
### 1 Attach Luer Needle

Up to 1.5 inches long.

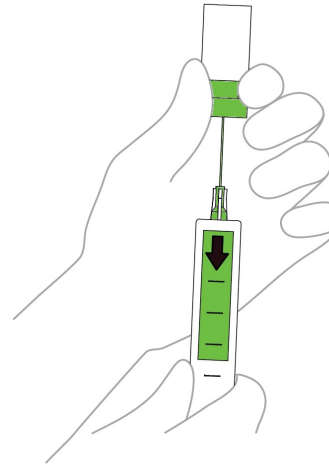


### 2 Prime Safety

Expel air & subtle click.

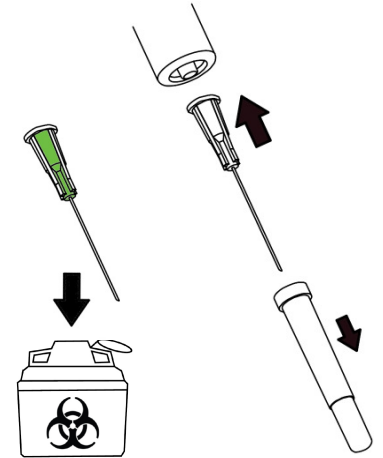


### 3 Draw Up Dose



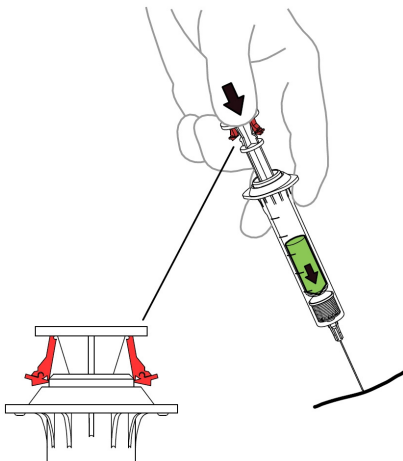
### 4 Exchange Luer Needle

World's best practice.



### 5 Inject Dose

Auto-retraction starts at completion of dose.

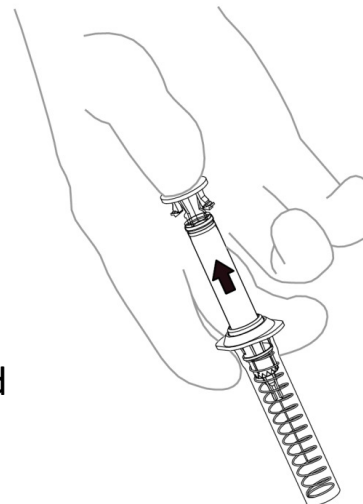


### 6 Retract Needle

User **controlled** rate of retraction.

Needle retraction can be initiated inside, or outside, the patient.

Syringe automatically disabled when fully retracted ensuring single use device.



### 7 Discard Syringe

